

ADEE ANNUAL MEETING
LEUVEN

7•10
SEPTEMBER
2024



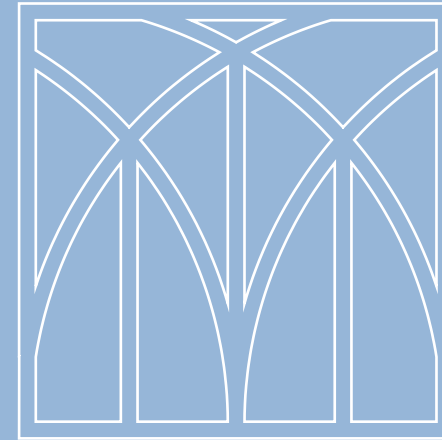
A.I. in Oral Health
Professionals' Education

Meeting Programme

#Adee

#AdeeLeuven2024

#AdeeAnnualMeeting



Contents:

About Leuven	2
Floor Planning	7
Exhibitors	9
Social and Special Event Sponsors	10
Ciry Map and main Locations	11
Programme	13
Invited Speakers	18
Corporate Partners	20



Prof Brian O'Connell
ADEE President 2024-2025

Professor Brian O'Connell has been Dean of the Faculty of Health Science, Trinity College Dublin, Ireland since 2021. He is Professor of Restorative Dentistry, Dublin Dental University Hospital, Trinity College Dublin, Ireland, where he served as Dean of Dental Affairs, 2015-2021. Brian has recently served as the Ninety-ninth President of the IADR, during 2022-23 and will be ADEE President 2024 - 2025.

ADEE President Welcome

Dear ADEE members, colleagues and friends,

It is my great pleasure to welcome you to ADEE 2024 being held in the historic city of Leuven. While gathered here together we will explore how the rise of AI within the education sector is altering the way we teach and practice. The impact of AI seems to have been unsuspected and rapid, however as has always been the case with regards to the integration of technologies Oral Health Professional Education faculty are for the most part responding with enthusiasm and creativity.

The ADEE Executive and Leuven Local Organising Committee under the leadership of Bart Van Meerbeek, KU Leuven Chair of the Department of Oral Health Science, Els Wlerinck Education Director Dentistry, and Local Organising Committee Chair Katleen Van Damme, have created an interesting and interactive programme of events. We get the opportunity to hear from local and international expertise, engage and interact in new technologies and of course network with colleagues and industry partners.

Importantly ADEE 2024 is giving over 170 colleagues the opportunity to share their research, learning and innovations through one of our delegate presentation slots. This alone demonstrates the importance of ADEE's annual meeting to its membership. While inclusion of so many colleagues works means delegates must make choice on which session to attend the Executive find it important to provide an opportunity to members to share their work.

Ranging from nutrition to well being, student engagement to entrustable professional activities, the variety of workshops, special interest groups and communities of practice being offered provide additional opportunities for you to delve deeper into some of the current hot topics in our profession. We are confident the sessions will trigger questioning and dialogue not only around the future of AI but oral health professionals' education itself.

As always we are delighted to have the FEHHD meeting hosted within our meeting structure and this year they are revisiting their 2016 'competency framework for aspiring deans and heads of dental schools' and the session promises to be of considerable value to senior academics. We also welcome those attending the 'Lage Landen', a pre meeting session of senior faculty from Belgian and the Netherlands.

Of course its not all work. The programme includes ample opportunity for networking and social events including an evening at the Faculty Club on Sunday and De Hoorn on Monday night.

I hope to see many of you throughout the meeting and look forward to reconnecting with you.

KU LEUVEN

Welcome to Leuven!

KU Leuven is proud to announce that the 2024 Annual Meeting of the Association for Dental Education in Europe (ADEE) will be held from 7 until 10 September 2024 in the beautiful city of Leuven (Belgium).



Bart Van Meerbeek

Chair of the Department of Oral Health Sciences
KU Leuven



Marcio Vivan Cardoso

Education Director of Dentistry
KU Leuven



Katleen Vandamme

President of the Local Organizing Committee
KU Leuven

The KU Leuven Department of Oral Health Sciences together with the UZ Leuven Medical Department Dentistry is an international leader and innovator in oral health, and a promotor of eminent research, education and patient care. We offer dental education with a broad (bio)medical basis, with a focus on quality, incorporating evidence-based theory, extensive (pre)clinical skills training, opportunities in research and new technology. We train our students on patient simulators in a new state-of-the-art preclinical training center.

The overall theme of the 2024 conference is 'Artificial Intelligence in Oral Health Professionals' Education'. We very much look forward to meeting the many colleagues and to delve into the use of AI in dental education, exploring its impact on student learning and teaching practices, and the benefits and challenges it presents for educators and students.

There are many good reasons to come to Leuven for the next ADEE meeting: It is the home to Europe's most innovative University; It is perfectly accessible 20 minutes from the airport; It is one of the world's prime regions for health, high-tech and creativity; It is a sustainable choice; It is a vibrant student city with a rich beer culture; and it is a city with centuries-old cultural heritage. Come see for yourself what makes Leuven so great and boast to your colleagues and friends you got to visit one of the high ranking European Best Destinations!

We look forward meeting you in Leuven.





Location and Venue

About Leuven

ADEE is thrilled to announce that our annual conference will be held in Leuven, Belgium, between the 7th and 10th September 2024. Nestled in the heart of Belgium, Leuven is a city that seamlessly blends history and a modern European ethos, offering ADEE attendees a unique experience.


Leuven's cobbled streets and historical almost fairytale charm, is a unique experience. As you ramble through the city, you'll find yourself surrounded by centuries of history, with ancient architecture coexisting harmoniously with contemporary innovations. The city's atmosphere is vibrant, reflecting its rich cultural tapestry and strong academic tradition.





At the core of Leuven's vitality is KU Leuven, one of the oldest universities in Europe. The presence of the University infuses the city with youthful energy, creating a dynamic ambiance that permeates its bustling squares and cozy cafes. The blend of academic tradition and a lively social scene makes Leuven an ideal setting for the ADEE conference.

As conference attendees gather in Leuven for ADEE's annual event, they will have the opportunity to immerse experience the city's unique blend of tradition and progress. The conference venue on the KU Leuven campus, surrounded by the city's cultural richness, will provide an inspiring backdrop for the exchange of ideas, informal networking and the forging of new connections.



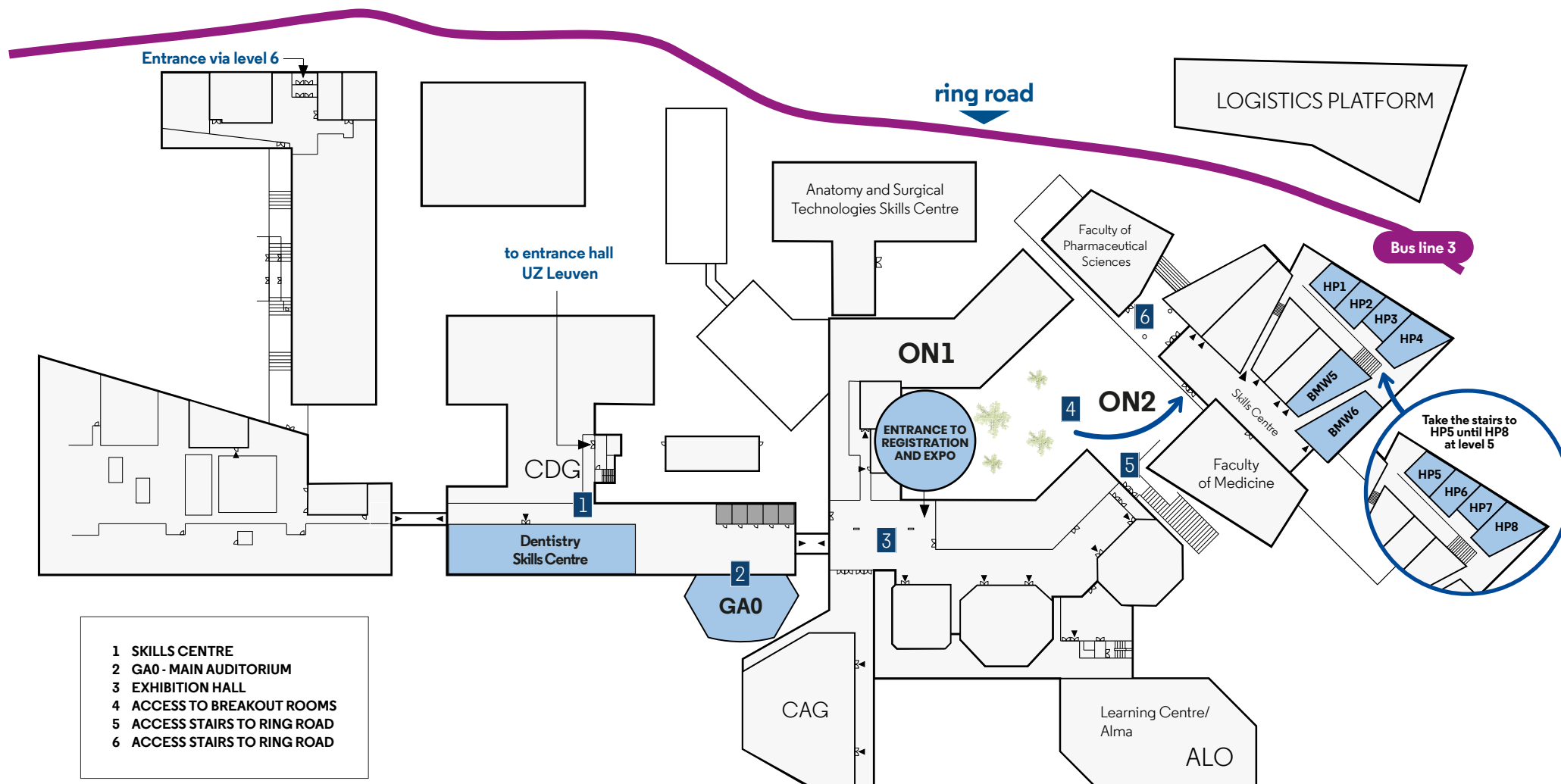
THE FACULTY OF MEDICINE-BIOMEDICAL SCIENCES CAMPUS

The Faculty of Medicine-Biomedical Sciences Campus at Gasthuisberg in Leuven stands out as the perfect spot for our annual meeting in 2024 due to its harmonious blend of academic tradition, accessibility, and the location within Leuven itself. KU Leuven campus and its faculty are renowned for cutting-edge research and education in the medical sciences, provides an environment that fosters intellectual exchange and collaboration.

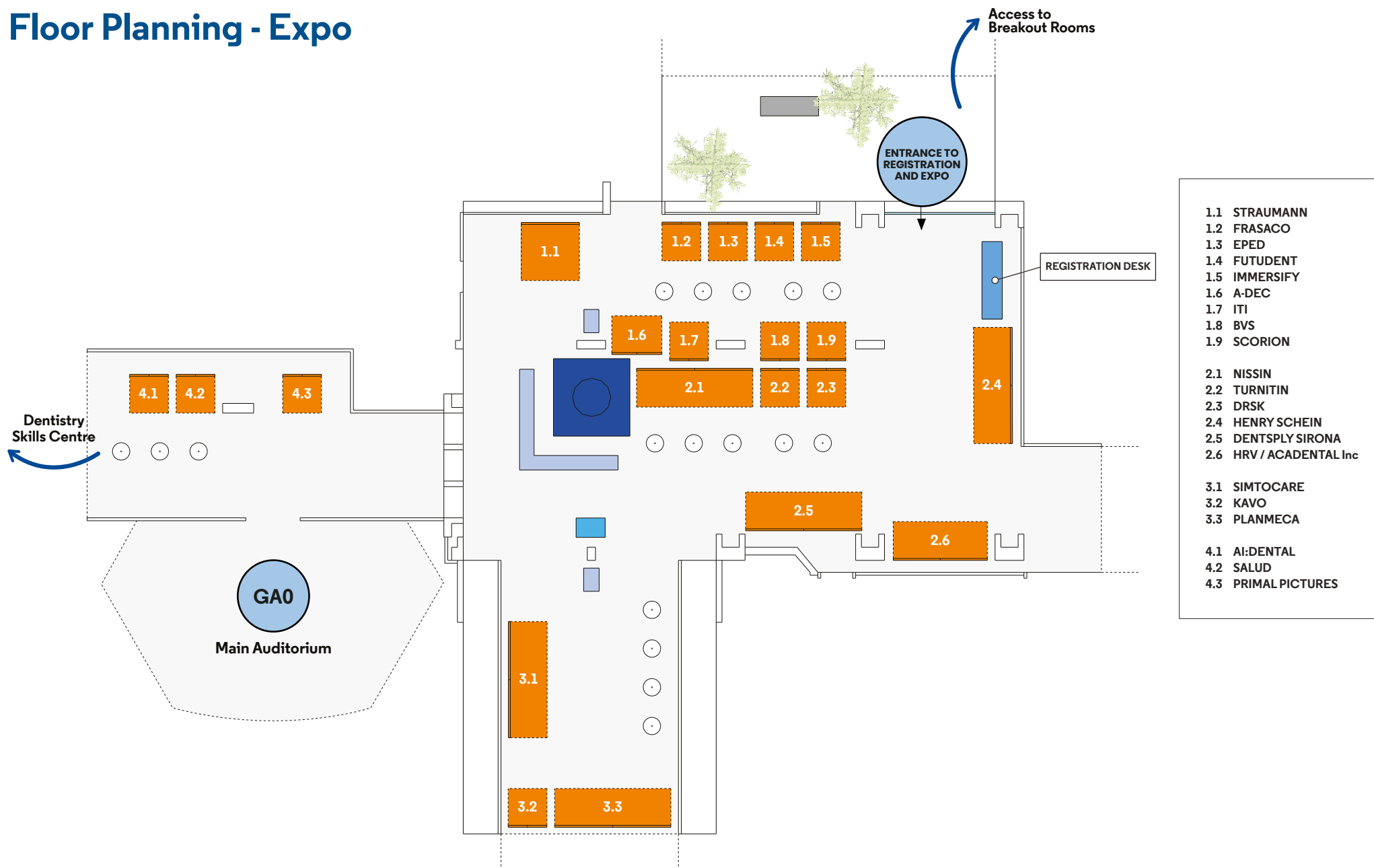
The strategic location just outside Leuven's town center ensures ease of access by bus, while the option for a leisurely 20-minute walk to nearby hotels and restaurants adds a touch of charm to the experience.

The historical and cultural richness of Leuven, coupled with the state-of-the-art facilities at Gasthuisberg, creates an ideal backdrop that promises to enhance the quality and significance of our annual meeting.

Gasthuisberg Campus - ON1 and ON2



Floor Planning - Expo



Exhibitors

A heartfelt thank you to the exhibitors of the ADEE 2024 annual meeting.
Your participation and support greatly enriches our event.
We deeply appreciate your contribution to our community.

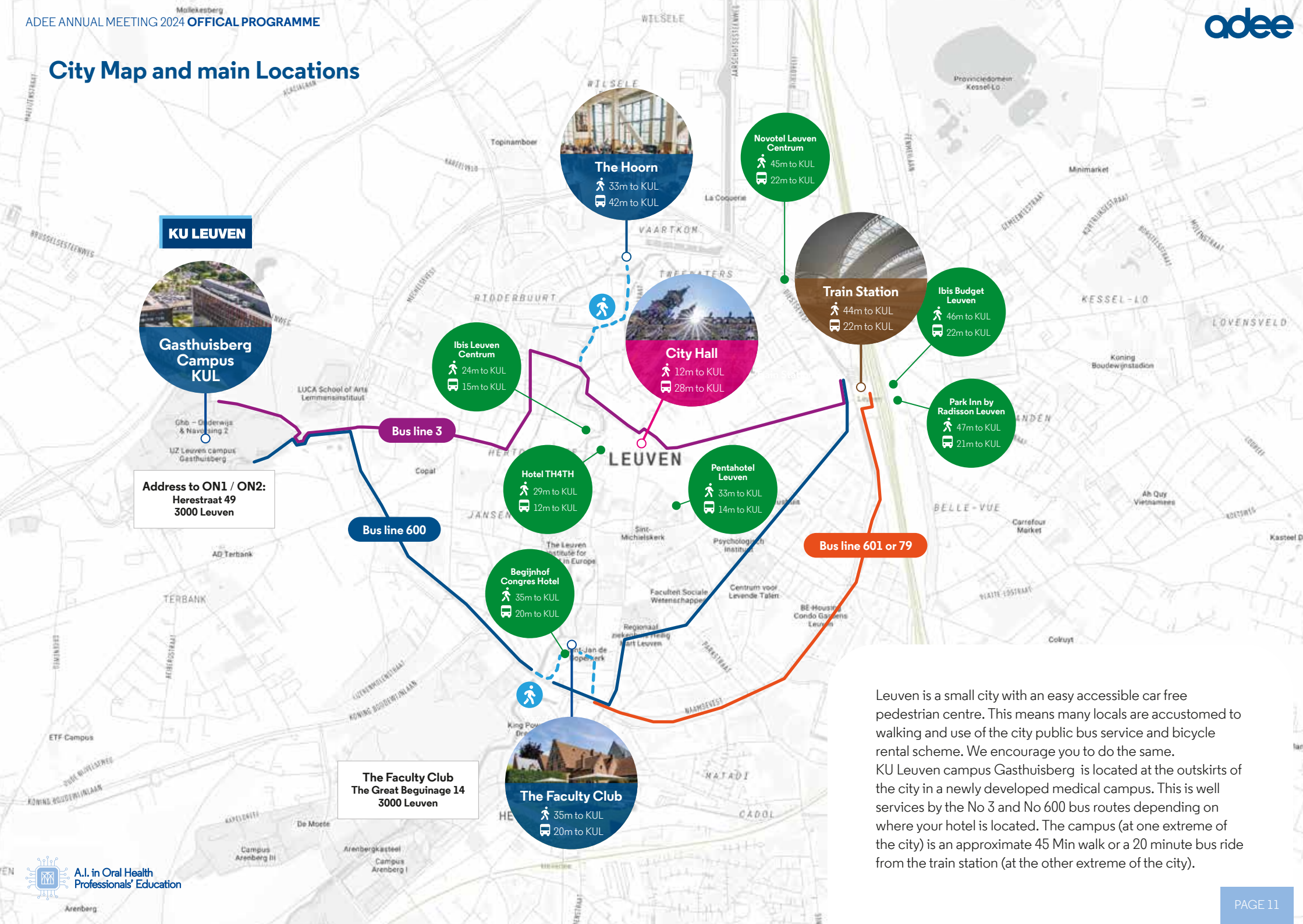
 ACADENTAL	AI:Dental	 a dec	 BVS	 Dentsply Sirona
 DRSK	 eped	 frasaco	 futudent» SHARE your CARE	 HENRY SCHEIN® SOLUTIONS FOR HEALTH CARE PROFESSIONALS
 immersify	 ITI International Team for Implantology	 KAVO Dental Excellence	 NISSIN	 PLANMECA
 PRIMAL PICTURES POWERING ANATOMY.TV	 SALUD	 SCORION	 SIMtoCARE	 straumann
	 turnitin™		 VIRTEASYDENTAL V2/VR	

Social and Special Event Sponsors

A heartfelt thank you to the sponsors of the ADEE 2024 meeting social and special events.
 Your generous support makes this gathering a memorable success.
 We deeply appreciate your contribution to our community.



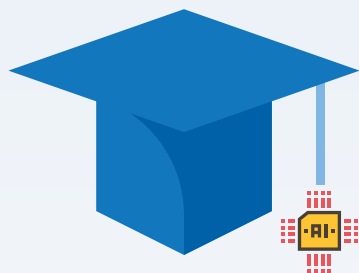
City Map and main Locations





Programme

Day 1



Sunday 8th September
A.I. in education

Day One at ADEE 2024 will focus on how we as academics can influence, manage and encourage ethical use of AI in the academic setting. We need to upskill our understanding of these new academic resources and integrate their usage into our daily lives if we are to remain current.

Our students are well informed and in many cases ahead of the curve in this regard and we must thus empower them with concepts of ethical and responsible use of AI. The programme will feature a keynote panel discussion, workshops, e-posters and community of practice, special interest groups all with relevance to assessment and AI.

Day 2



Monday 9th September
A.I. in dental practice

Within our clinical and practice management environments, AI has in fact been at play for some years. This can vary from taken for granted transcription, graphics and other technologies to more clinically focused AI assisted decision making.

Ensuring we, as academic keep abreast of these new technologies is essential so on day two we focus on how such technologies can be incorporated into our workflows.

Day 3



Tuesday 10th September
A.I. as an enabler of sustainability

AI when effectively used can reduce waste and error, enable easier access and add to a more sustainable practice environment be it academic or clinical.

Through this theme on day three we will showcase some examples from industry as well as academia on how AI is help make sustainability



Pre-Meeting

Saturday 7th September



<div>LOCATION</div> <div>TIME</div>	The Faculty Club: Sint Barbara	The Faculty Club: Willem Van Croy	The Faculty Club: Van Hamaele	GC Campus Leuven	Leuven City Hall
08:00					
10:00	 'Lage landen' Oral Health Faculties Meeting	 ADEE Executive Committee Meeting			
12:30			 ADEE ExCo Committee, FEHDD and 'Lage landen' Educators Meeting joint Lunch		
13:00				 Science meets Industry: GC & KU Leuven	
13:30		 FEHDD Summer Session			
14:00					
17:00					
18:30					 FEHDD, ADEE Regional Council and 'Lage landen' Networking Event
20:00					



Day 1

Sunday 8th September

A.I. in education

ROOM TIME	GA0 Auditorium	Exhibition Area	HP 1	HP 2	HP 3	HP 4	HP 6	HP 7	HP 8
07:30 - 08:30	ADEE Wellbeing - ADEE Fun Run Leuven								
09:00 - 10:30		Registration, Exhibition and coffee							
Attendees select one from this session steam									
10:30 to 12:00	Topic Related Oral Presentation: AI in Education		ADEE COP Well being	ADEE SIG Feedback: Artificial Intelligence: Friend or Foe in the Assessment of Dental Students?	SIMtoCARE user group meeting	Supporting the Implementation and Use of Programmatic Assessment in Dentistry	Unlocking AI's Potential to Transform Dentistry and Dental Education	GED Workshop: Developing usable GED grounded OSCE stations	Curaden: Sustainable Preventive Approaches for Revitalising Knowledge in Oral Health Education
12:00 to 13:00	ADEE LEADER Update and reviewer induction and training	Exhibition and refreshments							
12:40 to 12:55	Calm your mind - a moment of well-being by R. Volckaert								
Attendees select one from this session steam									
13:00 to 14:30	ADEE Tech Talks Session 1		5MP Session 1: Assessment, CPD & Professional Issues	5MP Session 2 : Curriculum & Faculty Development	Prepare your students for their OSCE with serious games	Working with Entrustable Professional Activities (EPAs) in dental education: a must for trust?	IFDEA Invitational Session: The WHO Action Plan: A Collaborative response from oral health professionals education	Harnessing the Power of Your EHR with AI Integrations and Generative AI	ADEE COP Well being Student Perspective
14:30 to 15:30		Afternoon refreshments in the Exhibition Hall							
15:30 to 17:00	 ADEE2024 Plenary 1: AI in education @GA0 Auditorium								
17:00 to 18:00		Networking and exhibition (and some beer tasting)							
19:30 to 22:00	 The Sunday Social @ The Faculty Club								





Day 2

Monday 9th September
A.I. in dental practice


ROOM TIME	GA0 Auditorium	Exhibition Area	HP 1	HP 2	HP 3	HP 4	HP 6	HP 7	HP 8	TECH Lab
08:30 to 09:00		Registration Desk Open							Heart Coherence - a moment of well-being by Dr. I. Duville	
09:00 to 10:30	ADEE2024 Plenary 2: AI in practice @GA0 Auditorium									
10:30 to 11:30		Morning refreshments in the Exhibition Hall								
<i>Attendees select one from this session steam</i>										
11:30 to 13:00	FREEStage Session 1		Increasing patient safety: Part 1	5MP Session 3: Teaching methods	Simodont user group meeting	5MP Session 4: Teaching methods	Regenerating Initial Carious Lesions in the era of AI driven dentistry		AI: Analysis of Outcomes of Healthcare at a US Dental School	The dentist meets AI : Integrating AI from Anatomy to Automated Implant Planning
13:00 to 14:00		Exhibition and refreshments		EDJE Editorial Board Meeting						
<i>Attendees select one from this session steam</i>										
14:00 to 15:30	Topic Related Oral Presentation: AI in Dental Practice		Increasing patient safety: Part 2	Community of Practice Professionalism	European Forum of Haptics and Digital Dentistry Teachers (EFHDDT)	Update from EFP			Strategies, challenges and change management in program-wide dental curriculum reform.	
15:30 to 16:30		Afternoon refreshments: Chocolate Tasting in the Exhibition Hall								
<i>Attendees select one from this session steam</i>										
16:30 to 18:00	Technologies in Dental Education, has the space odyssey evolved?		ADEE LEADER Update and reviewer induction and training	5MP Session 5: Technology enhanced learning	Students as collaborators, partners and educators – moving the conversation forward	Performance Assessment of Clinical Skills (PACS); an overview and critical analysis.	FREESTAGE Poster Session	In Focus	5MP Session 6: Technology enhanced learning	
19:30 to 22:00	An evening at De Hoorn									





Day 3

Tuesday 10th September
A.I. as an enabler of sustainability

ROOM TIME	GA0 Auditorium	Exhibition Area	HP 1	HP 2	HP 3	HP 4	HP 6	HP 7	HP 8
08:30 to 09:00		Registration Desk Open							
Attendees select one from this session steam									
09:00 to 10:30	FREEStage Session 2		Outcomes-based assessment for critical thinking - an interactive session	5MP Session 7: Miscellaneous including evaluation	Virteasy user group meeting	A pathway to success: implementing digital technology in dental school curriculum - an in-depth review	Selected Oral Presentations		Community of Practice Nutrition: Developing a European curriculum
10:30 to 11:30		Morning refreshments in the Exhibition Hall							
11:30 to 13:00	 ADEE2024 Plenary 3: AI as enabler of sustainable practice? @GA0 Auditorium								
13:00 to 14:00		Exhibition and refreshments							

Invited Speakers



Maarten De Vos
Research Professor
KU Leuven, Belgium

Maarten De Vos has a joint appointment as BOFZAP in the Departments of Engineering and Medicine at KU Leuven after being Associate Professor at the University of Oxford, United Kingdom, and Junior Professor at the University of Oldenburg, Germany. He obtained an MSc (2005) and PhD (2009) in Electrical Engineering from KU Leuven, Belgium. His academic work focuses on AI for healthcare monitoring and innovative biomedical monitoring for daily life applications. He is renowned for the derivation of personalised biosignatures of patient health and the incorporation of smart analytics into wearable sensors.

His pioneering research in the field of mobile real-life brain-monitoring has won several innovation prizes, among which the prestigious Mobile Brain Body monitoring prize in 2017, the Children's Prize for best childhood innovation in 2018, the Martin Black Prize for the best paper in Physiological Measurements in 2019 and in 2021 he received the IEEE EMBS Benelux award for best paper in the biomedical field.

He has been guest editor for International Journal of Clinical Neurophysiology, Sensors and Physiological Measurements and is currently on the editorial board of Journal of neural engineering, IEEE journal of biomedical health informatics and Nature Digital Health.

Maarten has a strong interest in translational research, he co-founded Circadian Therapeutics with the aim to bring innovative home-monitoring solutions to people suffering from sleep and circadian disorders and is programme director of Benefit, a medical innovation programme.



Falk Schwendicke
Director and Chair
Ludwig-Maximilians
University of Munich, Germany

Falk Schwendicke is currently Professor for Conservative Dentistry and Periodontology at the Ludwig-Maximilians-Universität München, Germany. His research focuses are on cariology, artificial intelligence, health economics and health services research. He is one of the most highly cited researchers in dentistry. Prior to his current position Falk was Head of the Department of Oral Diagnostics, Digital Health and Health Services Research at Europe's largest university hospital, the Charité in Berlin, Germany.

He also is the founding director of the Berlin Institute of AI and Health Policy and a Visiting Fellow at the University of Otago, New Zealand.



Reinhilde Jacobs
Professor
KU Leuven, Belgium

Reinhilde Jacobs is dentist, Doctor in Dental Sciences (PhD University of Leuven), periodontologist (KU Leuven) and Master in Dental Radiology (University of London). She is full professor at the University of Leuven and visiting professor at Karolinska Institutet, Stockholm, Sweden and the Dalian Medical University in China. R. Jacobs is heading the omfs impath research group of the KU Leuven (omfsimpath.be) and the clinical center of dentomaxillofacial radiology (UZLeuven).

She is Secretary General of the International Association of DentoMaxilloFacial Radiology. She is section editor of 4 journals (Clinical Oral Investigations, International Journal of Oral Implantology, European Journal of Radiology and Oral Radiology). She has received the D Collen Research Travel Award (1994), a postdoctoral fellowship of the European Commission (1994-95), the IADR Young Investigators Award (1998) and the Belgian Joachim Award in Odontostomatology (1999).

In 2013, she received a Dr Honoris Causa at the "Iuliu Hatieganu" University of Medicine and Pharmacy in Cluj-Napoca. She is involved in many multidisciplinary and interuniversity research collaborations, with a specific focus on imaging research, artificial intelligence and bioprinting. She has been actively participating in 5 European projects and is (co-)author of 5 books and more than 550 publications in peer-reviewed journals besides multiple invited lectures and publications in other journals or books. Scopus (2022):h:72



Peter Claes
BOF-ZAP research professor
Department of Human Genetics,
KU Leuven, Belgium

Peter Claes graduated in 2002 at the KU Leuven, department of Electrical engineering (ESAT), with a major in multimedia and signal processing. In 2007, he obtained a PhD in engineering, specifically on medical image analysis, at the KU Leuven, where he developed a computer based craniofacial reconstruction system for victim identification. He did a postdoc at the Melbourne Dental School, University of Melbourne from 2007 until 2011. This gave him the opportunity to interact deeply with other disciplinary researchers resulting in his transdisciplinary research portfolio with a versatile international network. In 2018-2019, he was a visiting scholar at the University of Oxford under Allison Noble at the Biomedical Engineering Department, UK.

Since 2014, he is an honorary fellow at the Murdoch Children's Research Institute, Melbourne, Australia. Currently he is a joint BOF-ZAP research professor at the department of ESAT-PSI and the department of Human Genetics, KU Leuven, Belgium. Peter Claes is head of the multidisciplinary laboratory of Imaging Genetics.



Francesco Gallo
Managing Director
Henry Schein One Italia

Francesco Gallo serves as Senior Director, Global AI Strategy and General Manager for Henry Schein One's branches in Italy, Austria, and Portugal. With over 25 years of experience in the technology sector, Francesco has built a distinguished career ranging from independent entrepreneurship to prominent roles in multinational organizations.

He previously held the position of Director of Innovation and Strategy and Board Member at NPO Sistemi S.r.L., part of the Ricoh Group, where he demonstrated considerable competence and vision in leading innovative initiatives.

Corporate partners

Platinum Partners



Gold Partners





ADVANCING EDUCATION
AND ORAL HEALTH